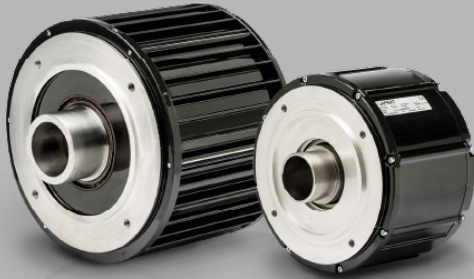


Servo Motori Brushless

MOTORI COPPIA



- Velocità, precisione, efficienza per performance al top
- Application oriented: servizio su misura, dalla progettazione all'assistenza
- Indipendente: compatibile con qualsiasi tipo di azionamento



TECHNICAL DATA

Motor Type

B10.10P 10 Nm - 500 rpm - 12 poles - 400V

PERFORMANCE DATA

Type	B10.10P
Stall torque (Deltat=105°C) Mo Nm	10
Rated speed n rpm	500
Rated power P _n kW	0.5
Rated torque (Deltat=105°C) Mn Nm	9.6
Peak torque M _{pk} Nm	45
Max speed n _{max} rpm	1500
Moment of inertia J 10?? Kgm ²	40
Peack torque acceleration a _{pk} rad/sec ²	11250
Thermal time constant T _{th} min	40
Thermal protection threshold ?max °C	140
Voltage constant k _e V _s	5.6
Torque constant k _t Nm/A	9.67
Resistance phase to phase (20°C) R _w ?	45.1

Inductance phase to phase L_w mH	165.4
B.E.M.F. @ rated speed E_n Vrms	293
Stall current I_o Arms	1.03
Rated current I_n Arms	0.99
Weight kg	15

Mechanical Data

Design	Aluminium
Degree of protection	IP 65 except A side flange
Bearings DE	6208 2ZC3WT
Bearings NDE	6204 2ZC3WT
Lubrication grease	low & high temperature grease
Regreasing device	permanent lubrication
Cooling	radiation and natural convection
Vibration Level	A (normal)

Electrical Data

Voltage	400V
Poles	12
Thermal protection	On-Off PTO switch
Insulation class	F
Ambient temperature	-15°C / +40 °C
Altitude	1000 m.a.s.l.