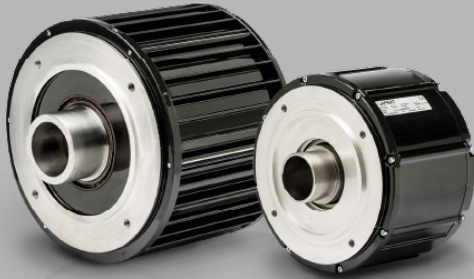


Servo Motori Brushless

MOTORI COPPIA



- Velocità, precisione, efficienza per performance al top
- Application oriented: servizio su misura, dalla progettazione all'assistenza
- Indipendente: compatibile con qualsiasi tipo di azionamento



TECHNICAL DATA

Motor Type B10.20P 20 Nm - 1000 rpm - 12 poles - 400V

PERFORMANCE DATA

Type	B10.20P
Stall torque (Deltat=105°C) Mo Nm	20
Rated speed n rpm	1000
Rated power P _n kW	1.6
Rated torque (Deltat=105°C) Mn Nm	15.8
Peak torque M _{pk} Nm	90
Max speed n _{max} rpm	1500
Moment of inertia J 10?? Kgm ²	80
Peack torque acceleration a _{pk} rad/sec ²	11250
Thermal time constant T _{th} min	40
Thermal protection threshold ?max °C	140
Voltage constant k _e V _s	2.8
Torque constant k _t Nm/A	4.85
Resistance phase to phase (20°C) R _w ?	3.6

Inductance phase to phase L_w mH	20.7
B.E.M.F. @ rated speed E_n Vrms	293
Stall current I_o Arms	4.12
Rated current I_n Arms	3.26
Weight kg	17.5

Mechanical Data

Design	Aluminium
Degree of protection	IP 65 except A side flange
Bearings DE	6208 2ZC3WT
Bearings NDE	6204 2ZC3WT
Lubrication grease	low & high temperature grease
Regreasing device	permanent lubrication
Cooling	radiation and natural convection
Vibration Level	A (normal)

Electrical Data

Voltage	400V
Poles	12
Thermal protection	On-Off PTO switch
Insulation class	F
Ambient temperature	-15°C / +40 °C
Altitude	1000 m.a.s.l.