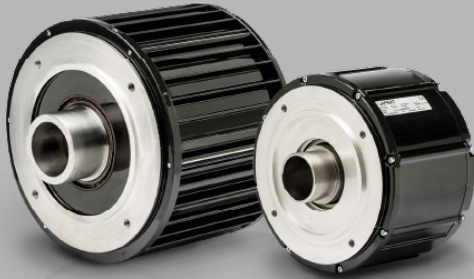


Servo Motori Brushless

MOTORI COPPIA



- Velocità, precisione, efficienza per performance al top
- Application oriented: servizio su misura, dalla progettazione all'assistenza
- Indipendente: compatibile con qualsiasi tipo di azionamento



TECHNICAL DATA

Motor Type

B16.C5P 150 Nm - 300 rpm - 24 poles - 400V

PERFORMANCE DATA

Type	B16.C5P
Stall torque (Deltat=105°C) Mo Nm	150
Rated speed n rpm	300
Rated power P _n kW	4.5
Rated torque (Deltat=105°C) Mn Nm	142
Peak torque M _{pk} Nm	510
Max speed n _{max} rpm	1200
Moment of inertia J 10?? Kgm ²	1159
Peack torque acceleration a _{pk} rad/sec ²	4400
Thermal time constant T _{th} min	90
Thermal protection threshold ?max °C	140
Voltage constant k _e V _s	9.7
Torque constant k _t Nm/A	16.8
Resistance phase to phase (20°C) R _w ?	2.82

Inductance phase to phase L_w mH	27.5
B.E.M.F. @ rated speed E_n Vrms	305
Stall current I_o Arms	8.9
Rated current I_n Arms	8.5
Weight kg	67

Mechanical Data

Design	Aluminium
Degree of protection	IP 65 except A side flange
Bearings DE	6216 2ZC3WT
Bearings NDE	6309 2ZC3WT
Lubrication grease	low & high temperature grease
Regreasing device	permanent lubrication
Cooling	radiation and natural convection
Vibration Level	A (normal)

Electrical Data

Voltage	400V
Poles	24
Thermal protection	On-Off PTO switch
Insulation class	F
Ambient temperature	-15°C / +40 °C
Altitude	1000 m.a.s.l.