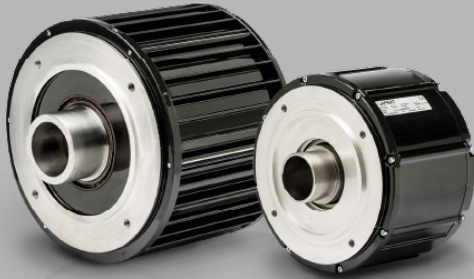


## Servo Motori Brushless

### MOTORI COPPIA



- Velocità, precisione, efficienza per performance al top
- Application oriented: servizio su misura, dalla progettazione all'assistenza
- Indipendente: compatibile con qualsiasi tipo di azionamento



## TECHNICAL DATA

Motor Type

B16.50P 50 Nm - 1000 rpm - 24 poles - 400V

## PERFORMANCE DATA

Type	B16.50P
Stall torque (Deltat=105°C) Mo Nm	50
Rated speed n rpm	1000
Rated power P <sub>n</sub> kW	4.1
Rated torque (Deltat=105°C) Mn Nm	39
Peak torque M <sub>pk</sub> Nm	173
Max speed n <sub>max</sub> rpm	1200
Moment of inertia J 10?? Kgm <sup>2</sup>	409
Peack torque acceleration a <sub>pk</sub> rad/sec <sup>2</sup>	4230
Thermal time constant T <sub>th</sub> min	50
Thermal protection threshold ?max °C	140
Voltage constant k <sub>e</sub> V <sub>s</sub>	2.85
Torque constant k <sub>t</sub> Nm/A	4.94
Resistance phase to phase (20°C) R <sub>w</sub> ?	0.82

Inductance phase to phase $L_w$ mH	6.6
B.E.M.F. @ rated speed $E_n$ Vrms	298
Stall current $I_o$ Arms	10.1
Rated current $I_n$ Arms	7.9
Weight kg	33

## Mechanical Data

Design	Aluminium
Degree of protection	IP 65 except A side flange
Bearings DE	6216 2ZC3WT
Bearings NDE	6309 2ZC3WT
Lubrication grease	low & high temperature grease
Regreasing device	permanent lubrication
Cooling	radiation and natural convection
Vibration Level	A (normal)

## Electrical Data

Voltage	400V
Poles	24
Thermal protection	On-Off PTO switch
Insulation class	F
Ambient temperature	-15°C / +40 °C
Altitude	1000 m.a.s.l.