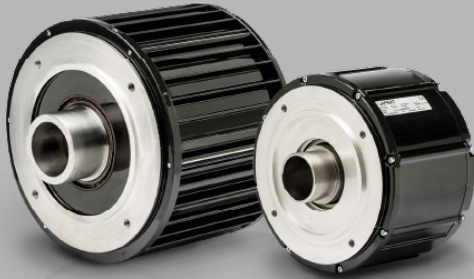


Servo Motori Brushless

MOTORI COPPIA



- Velocità, precisione, efficienza per performance al top
- Application oriented: servizio su misura, dalla progettazione all'assistenza
- Indipendente: compatibile con qualsiasi tipo di azionamento



TECHNICAL DATA

Motor Type

B18.CBP 115 Nm - 300 rpm - 30 poles - 400V

PERFORMANCE DATA

Type	B18.CBP
Stall torque (Deltat=105°C) Mo Nm	115
Rated speed n rpm	300
Rated power P _n kW	3.1
Rated torque (Deltat=105°C) Mn Nm	100
Peak torque M _{pk} Nm	345
Max speed n _{max} rpm	700
Moment of inertia J 10?? Kgm ²	1600
Peack torque acceleration a _{pk} rad/sec ²	2156
Thermal time constant T _{th} min	68
Thermal protection threshold ?max °C	140
Voltage constant k _e V _s	9.4
Torque constant k _t Nm/A	16.3
Resistance phase to phase (20°C) R _w ?	1.9

Inductance phase to phase L_w mH	33.1
B.E.M.F. @ rated speed E_n Vrms	295
Stall current I_o Arms	7.1
Rated current I_n Arms	6.1
Weight kg	63

Mechanical Data

Design	Aluminium
Degree of protection	IP 65 except A side flange
Bearings DE	6224 2ZC3WT
Bearings NDE	6212 2ZC3WT
Lubrication grease	low & high temperature grease
Regreasing device	permanent lubrication
Cooling	radiation and natural convection
Vibration Level	A (normal)

Electrical Data

Voltage	400V
Poles	30
Thermal protection	On-Off PTO switch
Insulation class	F
Ambient temperature	-15°C / +40 °C
Altitude	1000 m.a.s.l.